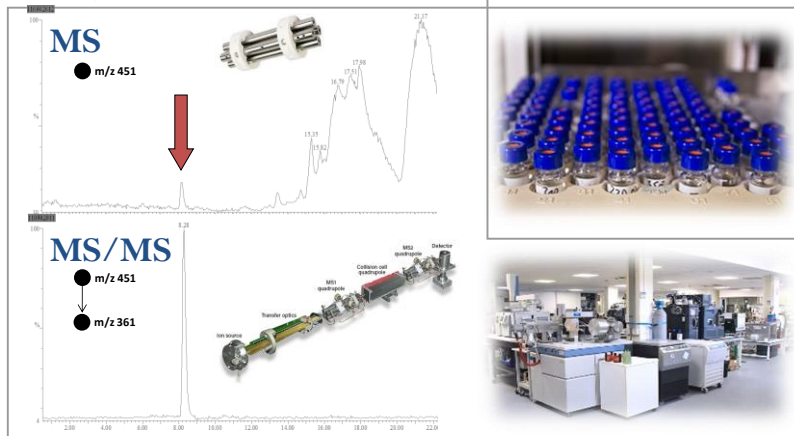


COMMISSION IMPLEMENTING REGULATION (EU) 2021/808

Nantes, 1st March 2022



LABERCA, Oniris, Nantes, France
www.laberca.org & www.saraf-educ.org

Bruno LE BIZEC, Professor
 Director of LABERCA and SARAF

1. INTRODUCTION

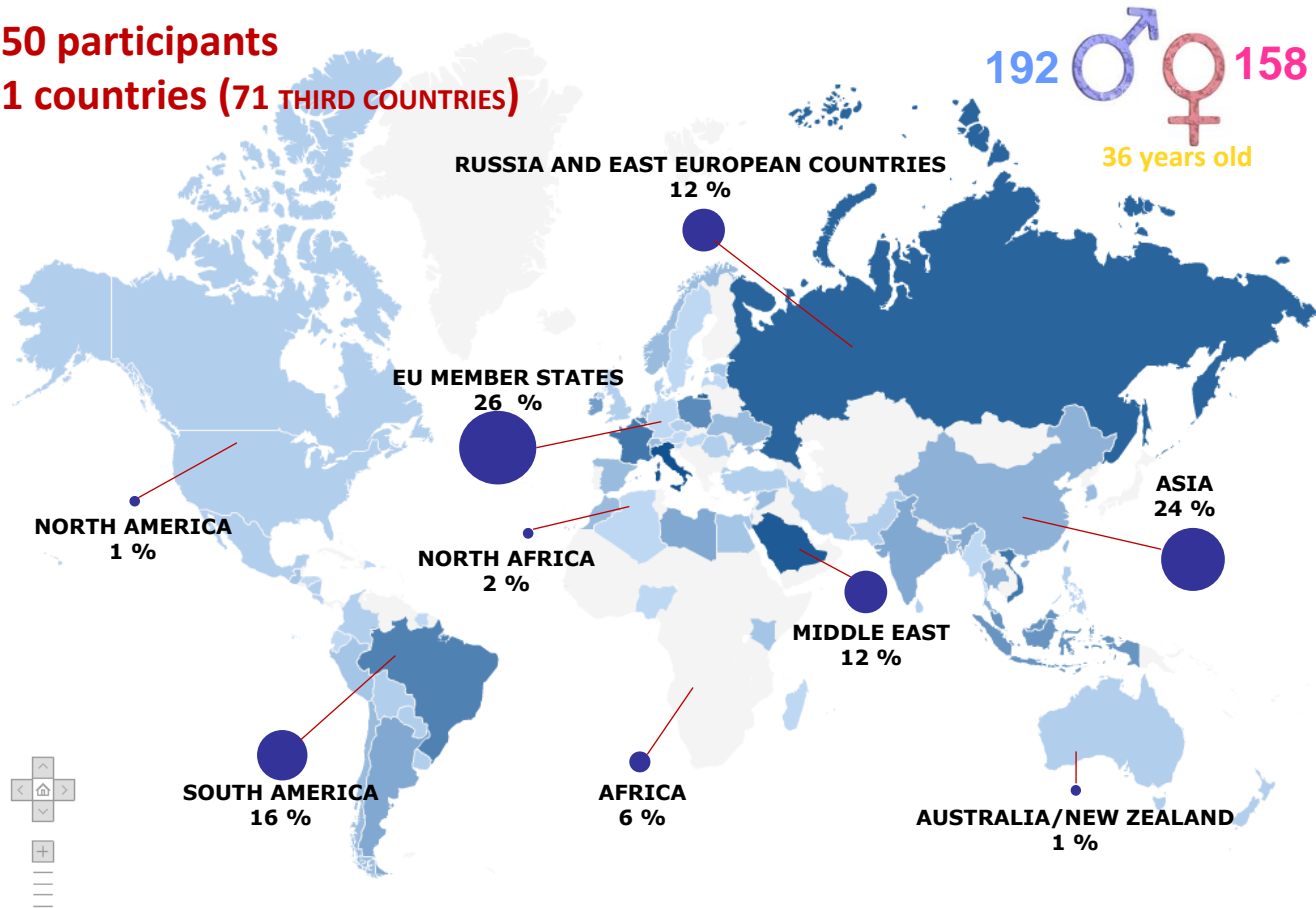
1.1 SARAF



**Bruno
LE BIZEC**



350 participants
91 countries (71 THIRD COUNTRIES)



1. INTRODUCTION

1.2 Partners involved



School for Advanced Residue Analysis in Food



1. INTRODUCTION

1.3 Programme

...
Apps

4
People

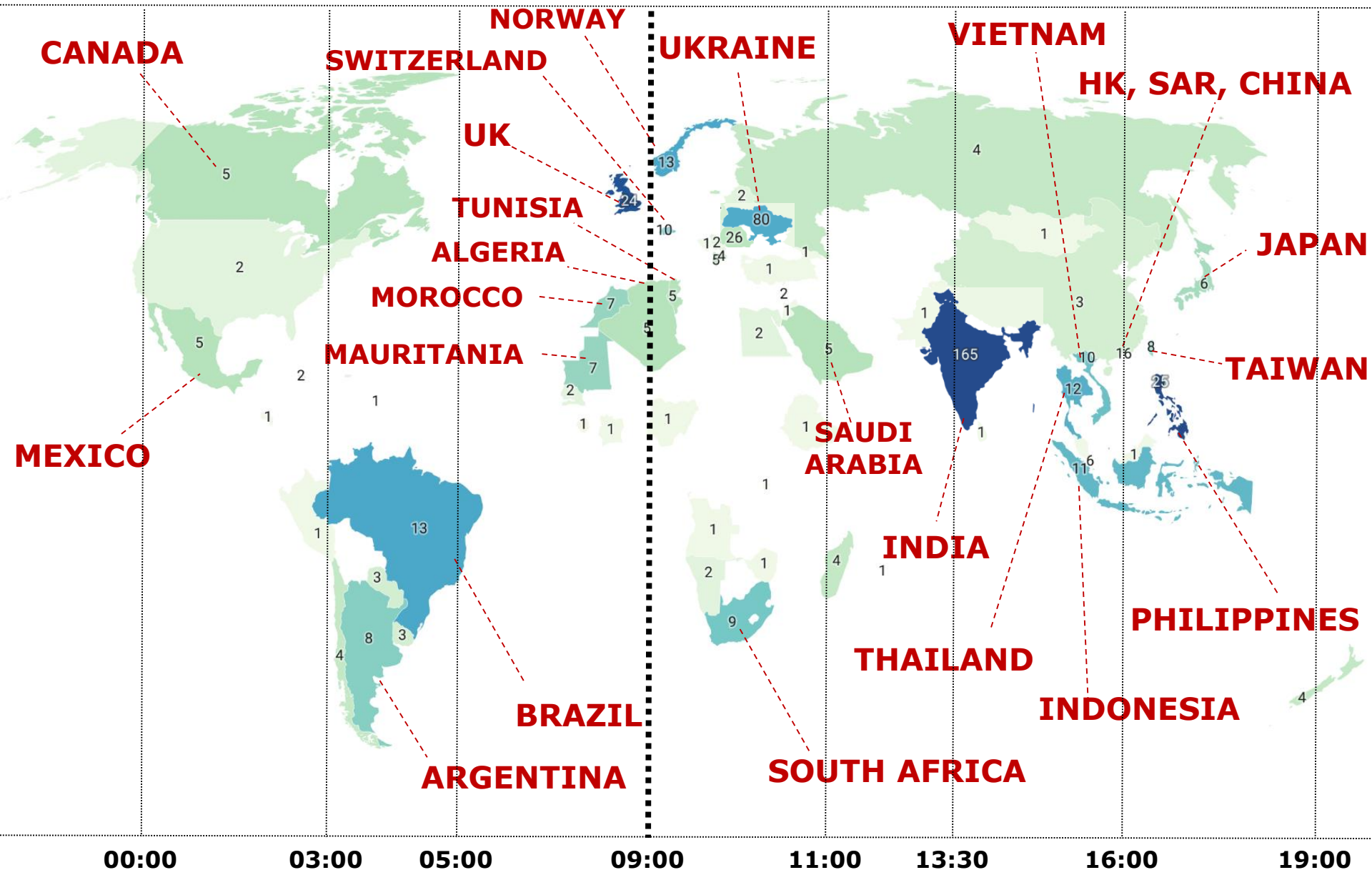
Questions

5
Chat

09:00 – 09:15	INTRODUCTION	Presentation of the speakers, welcome to the participants <i>Prof. Bruno Le Bizec, NRL Nantes, LABERCA</i>
09:15 – 09:45	PRESENTATION	25 min presentation + 5 min questions Current activities of the European Commission in the area of residues of veterinary medicines and the implementation of Reg. (EU) 2017/625 <i>Mr Frans Verstraete, EU DG SANTE Bruxelles</i>
09:45 – 10:15	PRESENTATION	25 min presentation + 5 min questions Commission Implementing Regulation (EU) 2021/808 – Overview of changes <i>Dr Joachim Polzer, EURL Berlin, BVL</i>
10:15 – 10:25	BREAK	
10:25 – 10:50	PRESENTATION	20 min presentation + 5 min questions EURL Guidance Document on Screening Method Validation (focus on microbiological, immunological and physico-chemical screenings) <i>Dr Eric Verdon and Dr Valerie Gaudin, EURL Fougères, Anses</i>
10:50 – 11:15	PRESENTATION	20 min presentation + 5 min questions EURL Guidance Document on Confirmation Method Validation (conventional approach) <i>Drs Saskia Sterk, EURL Wageningen, WFSR</i>
11:15 – 11:40	PRESENTATION	20 min presentation + 5 min questions EURL Guidance Document on Confirmation Method Validation (alternative approach) <i>Dr Joachim Polzer, EURL Berlin, BVL</i>
11:40 – 12:00	CONCLUSION	1-2 cross-cutting questions answered by each expert in his/her field

1. INTRODUCTION

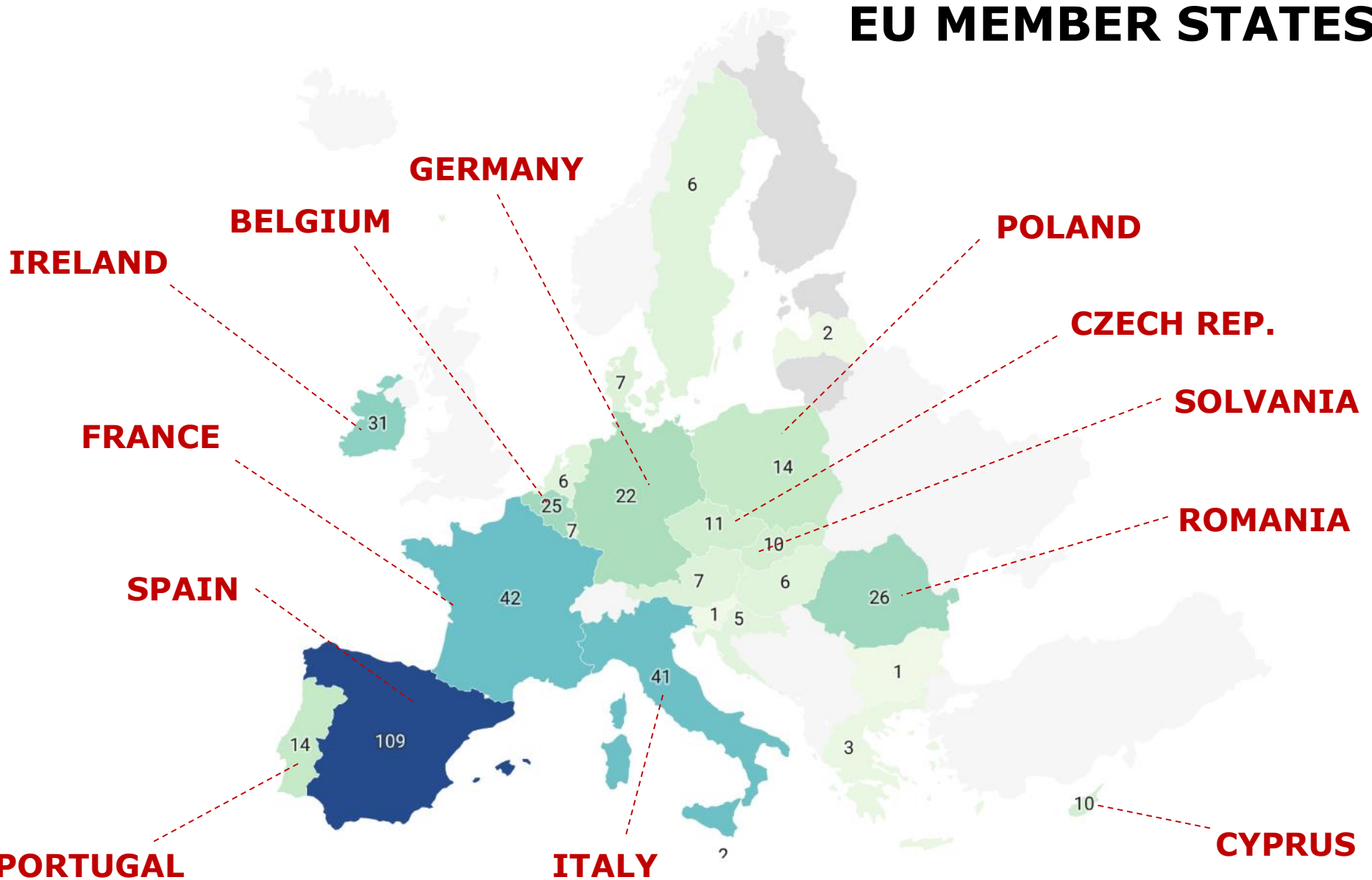
1.4 Participants to the Webinar: international (56%) excluding EU member states (44%)



1. INTRODUCTION

1.4 Participants to the Webinar: EU member states (44%)

EU MEMBER STATES



1. INTRODUCTION

1.5 Acknowledgments



School for Advanced Residue Analysis in Food



**Yann
GUITTON**



**Ronan
CARIOU**



**Emmanuelle
BICHON**



**Florence
RAMDIN**



**Gaud
DERVILLY**



**Jean-Philippe
ANTIGNAC**



**Fabrice
MONTEAU**



Slomy NORESKAL



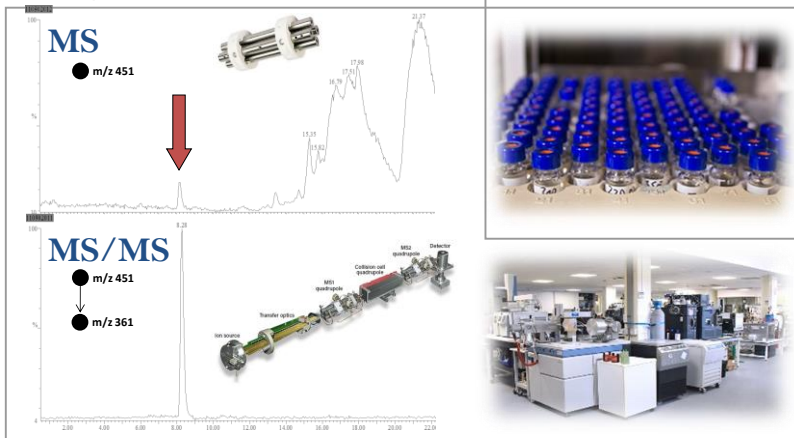
Marie-Laure MARTIAL



The network of
Agricultural Business Advisors
French Ministry of Agriculture

COMMISSION IMPLEMENTING REGULATION (EU) 2021/808

Nantes, 1st March 2022



LABERCA, Oniris, Nantes, France
www.laberca.org & www.saraf-educ.org

Bruno LE BIZEC, Professor
 Director of LABERCA and SARAF